



dofer

- PRE-CUT REBAR • WIRE MESH • CONCRETE REINFORCING BAR •
- REBAR CHAIRS & REINFORCEMENT SPACERS •

WE CREATE VALUE
SINCE 1985

• dofer.com.tr



Price Advantage Enabled by Self Manufacturing

30+ Years of Experience

Production %100 Compliant with Regional & International Standards

Machine Park Fully Equipped with Latest Technology

Oriented to Customer Satisfaction

Professional and Experienced Management

Strong Capital Structure

DELIVERY ON TIME

VALUE

From day one on, our motto has been “Trust, first!”

We strive to gain hearts

We strive to create value

We define your problem & optimize your solution

WE DIFFER BY OUR COMMITMENT

TO VALUES

TO SOLUTIONS

TO SATISFACTION



COMPANY INFORMATION

DOFER started its business enterprise by trading timber and construction materials in Ankara – capital city of Turkey in 1985. Today, DOFER is operating for 4 generations and has become one of the major trader of rebar and producer of wire mesh in its region.

CREATING VALUE TO OUR CUSTOMERS

Making customer satisfaction is DOFER's # 1 priority, from first day on. DOFER has developed strategic partnerships with various market participants & undertook many projects that created added value for its customers & the industry.

COMPETITIVENESS

- Price advantage enabled by self-manufacture
- High logistic capacity & solutions
- Huge storage capacity
- A robust financial & solution partner
- Ethical business

Based on four generations of experience, DOFER continues to take confident steps into the future with its sustainable business, ethical values & innovative & professional cadre.



The company's shares were offered to the public in October 2023 and started trading on Borsa İstanbul A.Ş. Main Equity Market on October 16, 2023.

Ankara FACTORY



Karabük FACTORY



Company Information



44.400 m²

Storage Space



19.600 m²

Factory Site



180

Employee

300

**Thousand Tons of
Annual Trade of
Reinforcing Bar**

90

**Thousand Tons of
Annual Wire Mesh
Production**

2800 Tons

**Rebar Chairs &
Reinforcement Spacers**

24

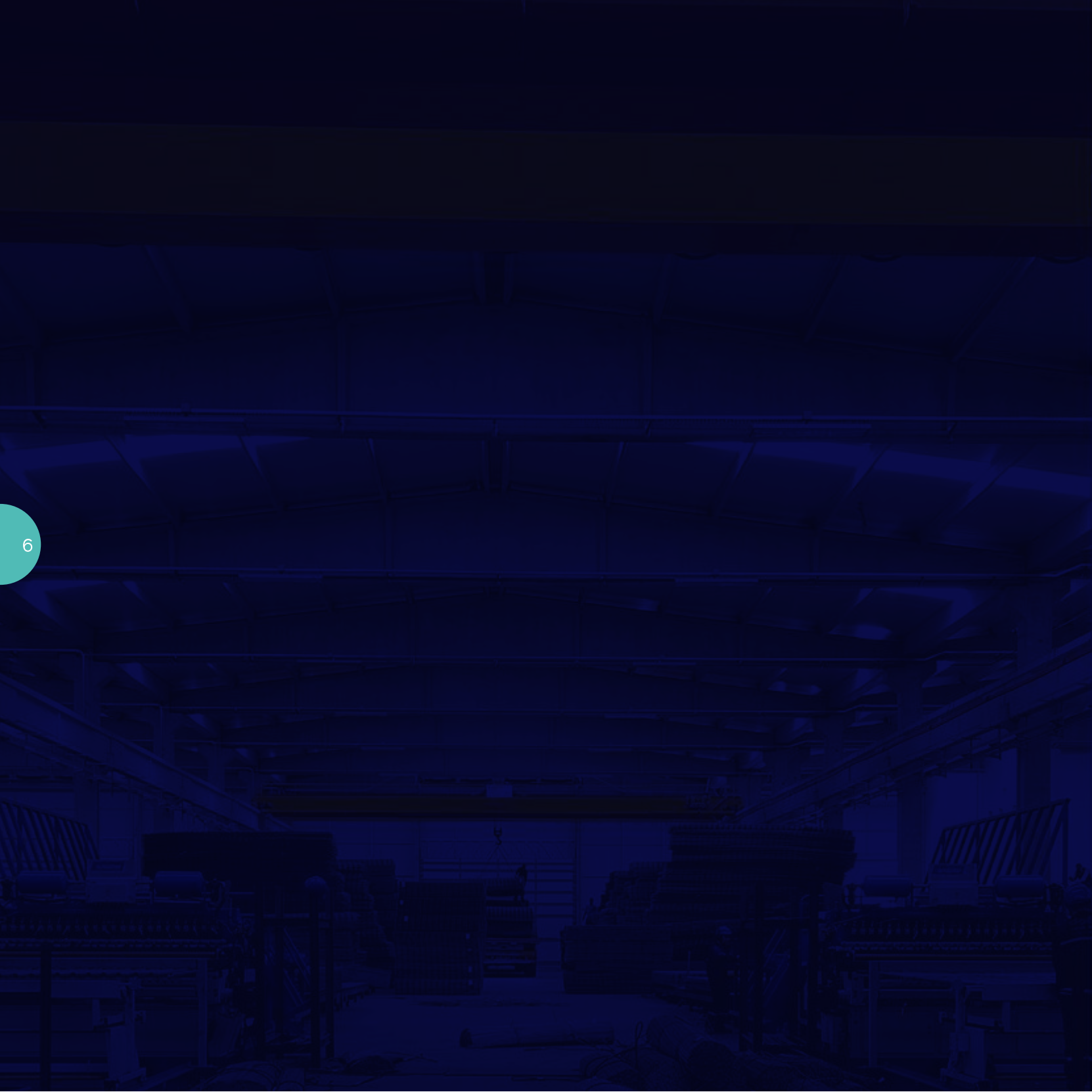
**Thousand Tons of
Annual Reinforcing
Pre-cut Rebar**

5.000 +

Reference Project Number

1.000 +

Customers



Products

7

Trade of Reinforcing Bar

With a stock area of about 10,000 m² and a strong logistics infrastructure, DOFER delivers the desired product to the desired address in the shortest time possible.

CONCRETE REINFORCING BAR

■ HS Code: 72.14.20



WIRE ROD

■ HS Code: 72.13.91



Pre-Cut Rebar

Since 2006, DOFER has been producing pre-cut rebar in pre-cut rebar plant with an annual production capacity of 24.000 tons, so as to develop solutions suitable for every project.

Pre-cut rebar use brings the advantages such as;

- Unique to the plan and the project,
- Up to 50% savings in labor and labor costs,
- Faultless production
- Minimization of concrete consumption,
- Complete production and delivery guarantee

■ HS Code: 72.14.20



Wire Mesh

DOFER;

14.400 m² in Ankara Capital City Organized Industrial Zone with 8.600 m² closed and 5.800 m² open;

30.000 m² in Karabuk Organized Industrial Zone with 10.950m² closed and 19.050 m² open.

44.400 m² total production area with 17.300 m² closed and 26.800 m² open area.

Some of the produced wire mesh is exported abroad since 2017.

■ HS Code: 73.14.20



COLD DRAWN BAR

Flat Steel Bar

Its main uses are; panel fence, grid, pin cage, suspended ceiling tensioning materials etc.



Technical Specifications	
Diameter	3,80 mm – 11,00 mm
Tensile Strength	Min. 550 N/mm ²
Flow Strength	Min. 500 N/mm ²
Raw Materials	SAE 1006, 1008, 1010
Quality	TS 4559, DIN 488, ASTM or other international standards

Ribbed Steel Bar

Its main uses are; panel fence, grid, pin cage, suspended ceiling tensioning materials etc.



Technical Specifications

Diameter	3,80 mm – 12,50 mm
Tensile Strength	Min. 550 N/mm ²
Flow Strength	Min. 500 N/mm ²
Raw Materials	SAE 1008, 1010
Quality	TS 4559, DIN 488, ASTM or other international standards

PIPE FLUME

Quality	Diameter	Raw Materials
TS 4559, DIN 488, ASTM or other international standards	4,00 mm – 10,00 mm	SAE 1008, 1010

Sizes

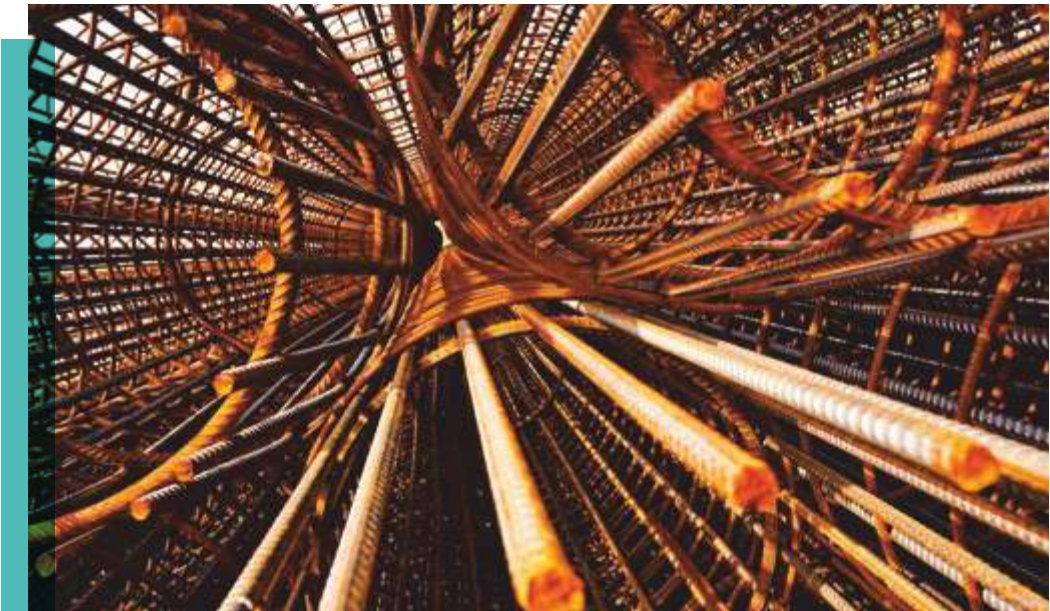
Wire Diameter	Interocular Distance	Mesh Size
4,00 mm – 10,00 mm	Width: 50 mm – 400 mm	Width: 750 mm – 2500 mm
3,50 mm – 10,00 mm	Length: 50 mm – 400 mm	Length: 2400 mm – 9000 mm

Mechanical Specifications

Wire Diameter	Tensile Strength	Flow Strength	Extension
4,00 mm – 10,00 mm	Min. 550 N/mm ²	Min. 500 N/mm ²	%5 – %8

Packaging

Wire Diameter	Package Mesh Item	Package Weight
4,00 mm – 10,00 mm	50 – 100	500 – 2000 kg



SPECIALLY-PREFABRICATED

Quality	Diameter	Raw Materials
TS 4559, DIN 488, ASTM or other international standards	4,00 mm – 10,00 mm	SAE 1008, 1010

Sizes

Wire Diameter	Interocular Distance	Mesh Size
4,00 mm – 10,00 mm	Width: 50 mm – 400 mm	Width: 750 mm – 2500 mm
3,50 mm – 10,00 mm	Length: 50 mm – 400 mm	Length: 2400 mm – 900 mm

Mechanical Specifications

Wire Diameter	Tensile Strength	Flow Strength	Extension
4,00 mm – 10,00 mm	Min. 550 N/mm²	Min. 500 N/mm²	%5 – %8

Packaging

Wire Diameter	Package Mesh Item	Package Weight
4,00 mm – 10,00 mm	50 – 100	500 – 2000 kg



REINFORCED CONCRETE STRUCTURE

Depending on the type of wire mesh, 30, 50 and 100 layers are packed with tight fitting of wires.
Maximum package weight is 2000 kg.



Quality	Diameter	Raw Materials
TS 4559, DIN 488, ASTM or other international standards	4,00 mm - 10,00 mm	SAE 1008, 1010

Sizes

Wire Diameter	Interocular Distance	Mesh Size
4,00 mm - 10,00 mm	Width: 50 mm - 400 mm	Width: 750 mm - 2500 mm
3,50 mm - 10,00 mm	Length: 50 mm - 400 mm	Length: 2400 mm - 900 mm

Mechanical Specifications

Wire Diameter	Tensile Strength	Flow Strength	Extension
4,00 mm - 10,00 mm	Min. 550 N/mm ²	Min. 500 N/mm ²	%5 - %8

Packaging

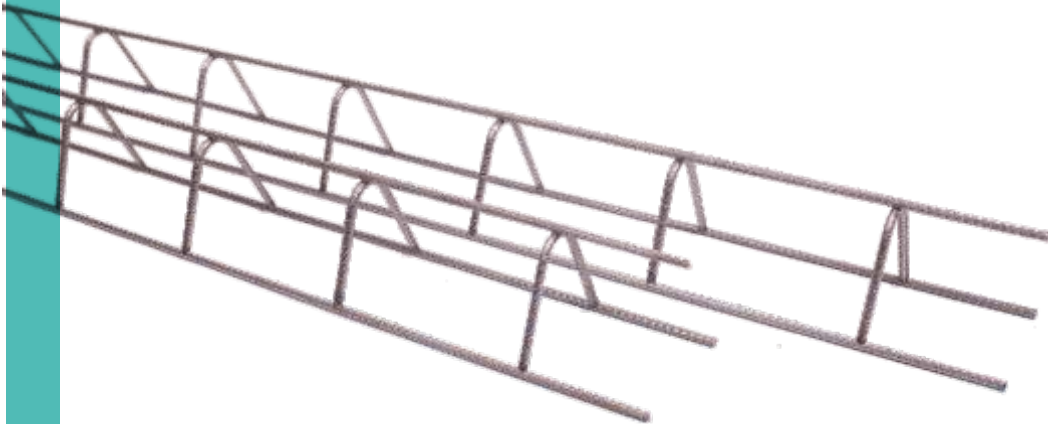
Wire Diameter	Package Mesh Item	Package Weight
4,00 mm - 10,00 mm	50 - 100	500 - 2000 kg

Rebar Chairs & Reinforcement Spacers

Produced by cold drawing of SAE 1008 grade wire rod, then wound into coils. These coils are used in the mesh welding machine to manufacture support components.

Type	Height cm	Weight kg	Size	Bundle Quantity	Weight per Piece (kg)	Bundle Weight (kg)	Diameter size	Diameter max	Quantity size	Quantity Max	Width Max
DF 50	5.0	0.600	200	500	1.20	600	5.0	5.0	3	16	12,5
DF 75	7.5	0.650	200	500	1.30	650	5.0	5.0	3	16	12,5
DF 90	9.0	0.985	200	500	1.30	685	5.0	5.0	3	16	12,5
DF 100	10.0	0.715	200	500	1.43	715	5.0	5.0	3	16	12,5
DF 120	12.0	0.770	200	500	1.54	770	5.0	5.0	3	16	12,5
DF 150	15.0	0.850	200	500	1.70	850	5.0	5.0	3	16	12,5
DF 200	20.0	0.980	200	500	1.96	980	5.0	5.0	3	16	12,5
DF 250	25.0	1.105	200	500	2.21	1.105	5.0	5.0	3	16	12,5





Quality Approach

DOFER family has adopted the following Quality Approach while continuing its activities.

- Accident-free production by applying risk management.
- Being aware that corporate information is a value, ensuring information security.
- Establish open communication and confidence with our employees, customers and suppliers, to ensure confidence.
- To provide innovative and creative employee culture.
- To produce and present services that meet the customer's preference and demands within the framework of international standards.
- To ensure sustainability of customer satisfaction



References

Reference Companies

- Ünsal Grup
- Astor
- Belbeton
- Caba İnşaat
- Çelikler
- Çiftay
- Doğuş İnşaat
- Esta İnşaat
- Fernas
- Forsaş A.Ş.
- Gülermak
- Kalyon
- Kolin
- Kam Beton
- Limak
- Mitaş Galvaniz
- Petlas
- Rönesans İnşaat
- Türkerler
- Uluova İnşaat
- Ulusoy Elektrik
- Yolbulan

Reference Projects

- 365 AVM
- Adana Şehir Hastanesi
- Ak Parti Genel Merkezi
- Ankara Metrosu
- Ankara Tren Garı
- Ankara - Sivas Hızlı Tren Hattı
- Atakule
- Baku-Ceyhan Railway Line
- Cema Alışveriş Merkezi
- Presidential Complex
- Çukurova Havalimanı
- Etlik Şehir Hastanesi
- Kuzey Marmara Otoyolu
- National Intelligence Organization
- Pendik Metrosu
- Sabiha Gökçen Havalimanı
- Temelli Güneş Santrali
- Toki Projeleri
- Yusufeli Barajı



HEADQUARTERS

Turgut Özal 2 Boulevard No:34
Altındağ - ANKARA / Türkiye
Tel: 0 312 319 46 71
Fax: 0 312 362 41 86

Ankara FACTORY

Baskent Organized Ind. Zone
Ankara / Türkiye
Tel: 0 312 640 11 44
Fax: 0 312 640 11 47

Karabük FACTORY

Karabük Organized Ind. Zone
Ankara / Türkiye
Tel: 0 370 447 60 00
Fax: 0 370 447 62 62

• dofér.com.tr